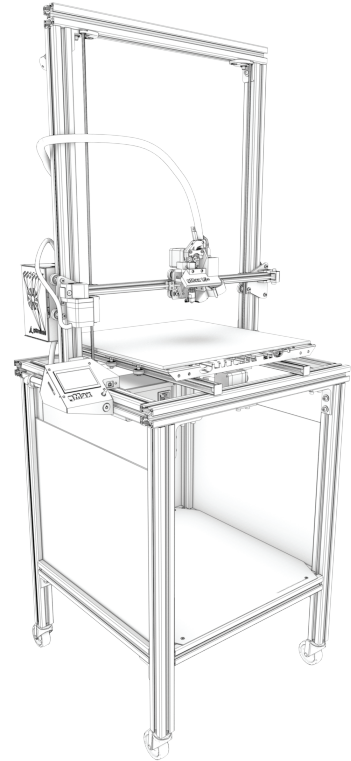


gMax Rolling Cart

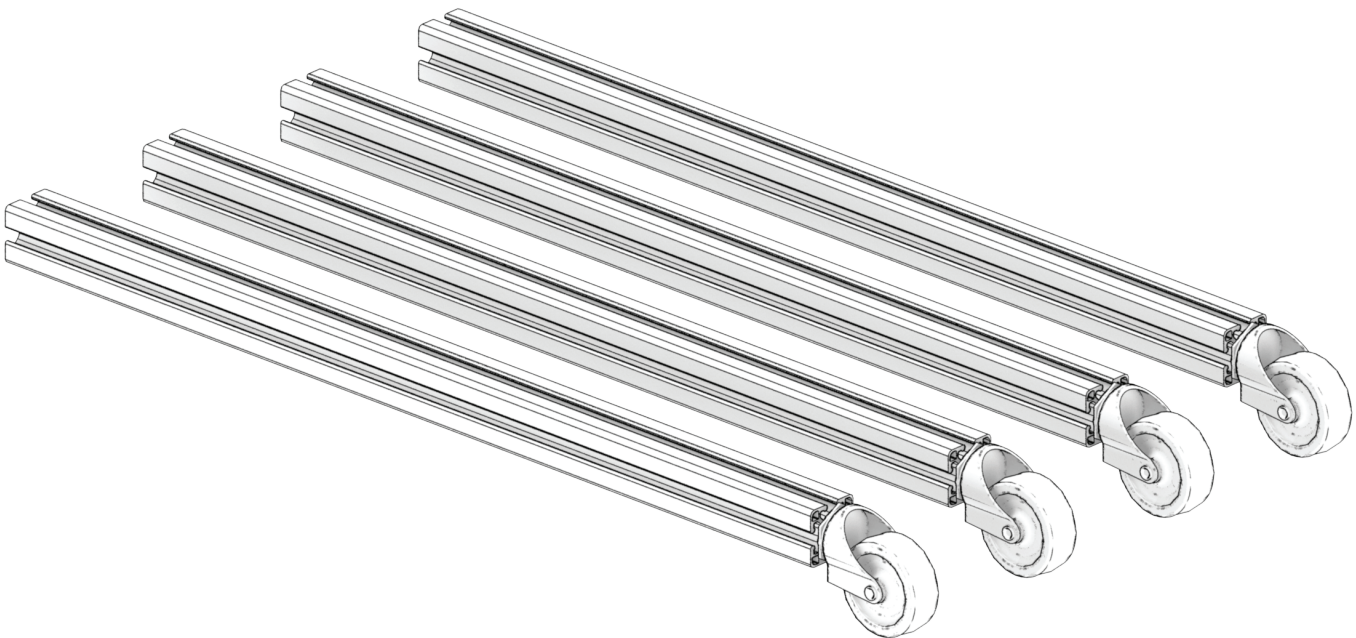
Assembly Guide

Updated 201106

(for gMax 1.5, 1.5+ and 2)



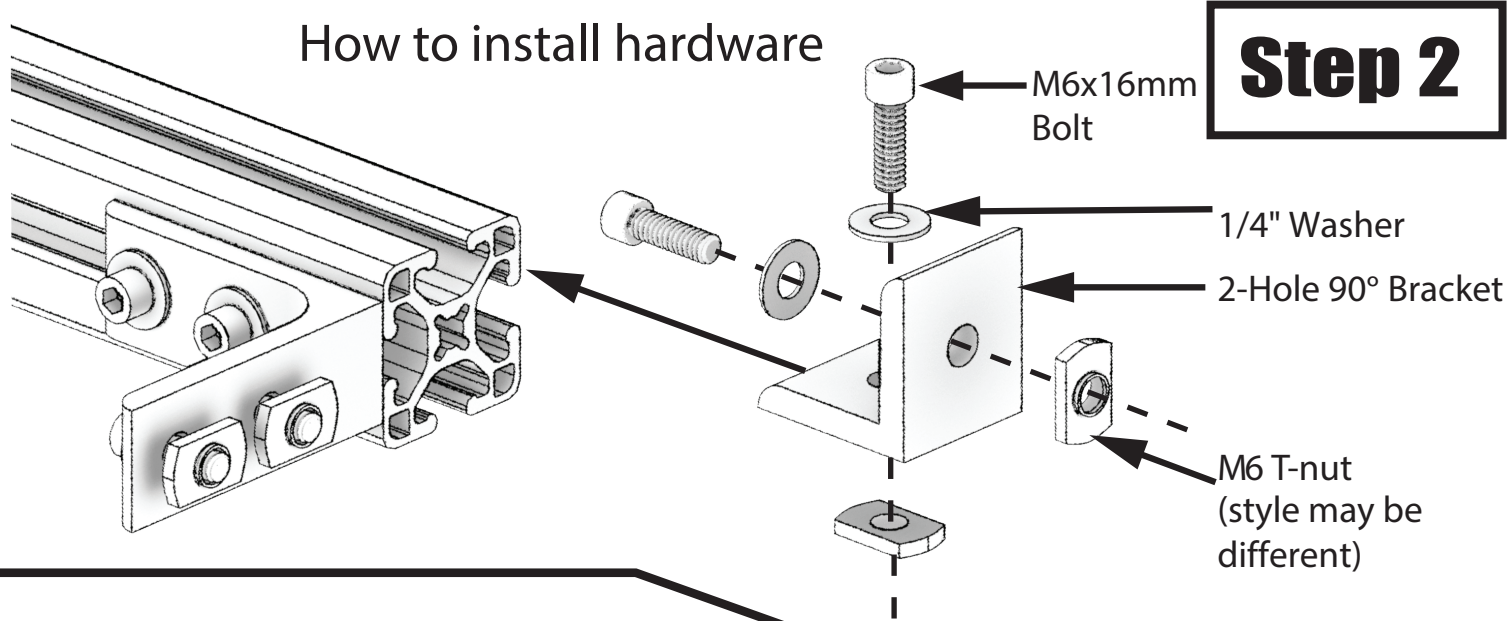
Step 1



Screw in (4) casters
on 26" rails

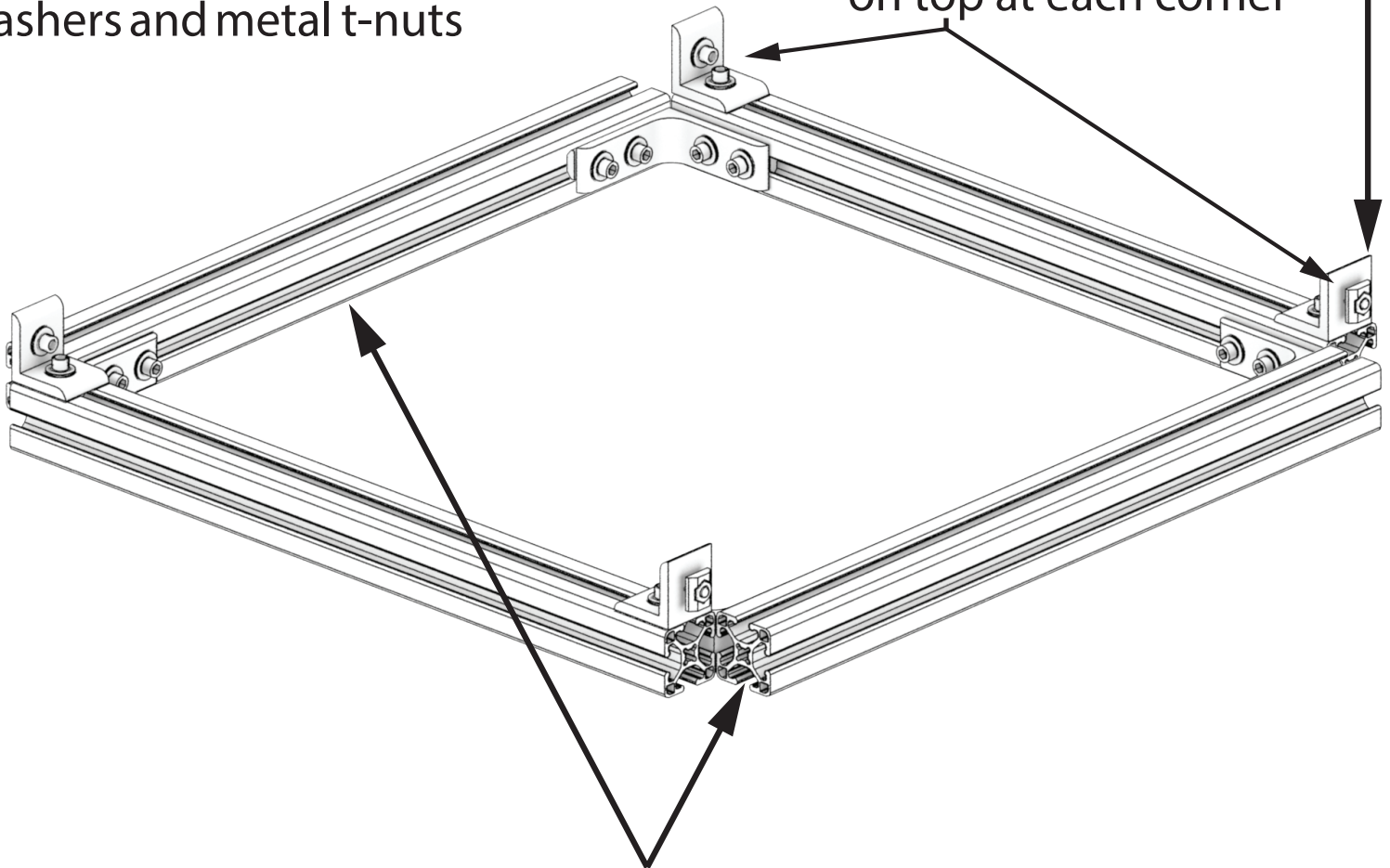
Step 2

How to install hardware



Install 2-hole 90° aluminum brackets on 18" rails using M6x16mm bolts, 1/4" washers and metal t-nuts

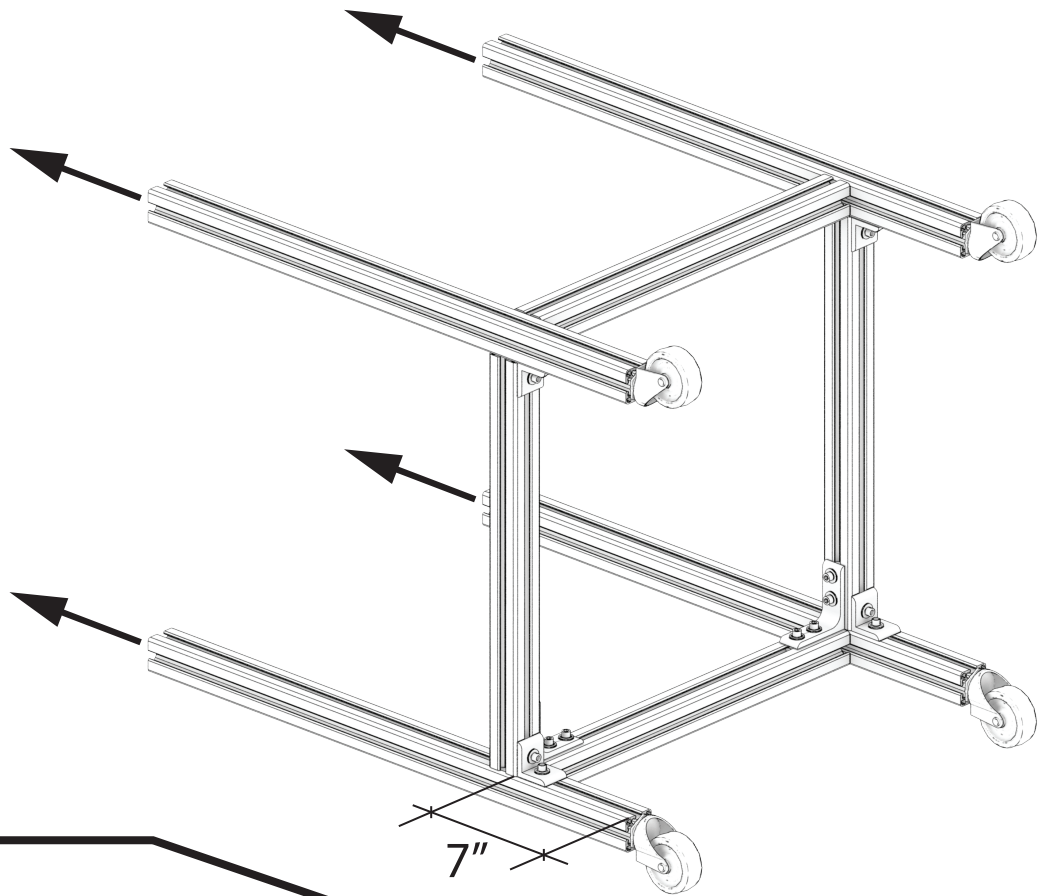
2-Hole 90° brackets on top at each corner



Slide in (2) t-nuts on bottom of each rail, if you want to secure the metal shelf in the future.
(See last page)

Step 3

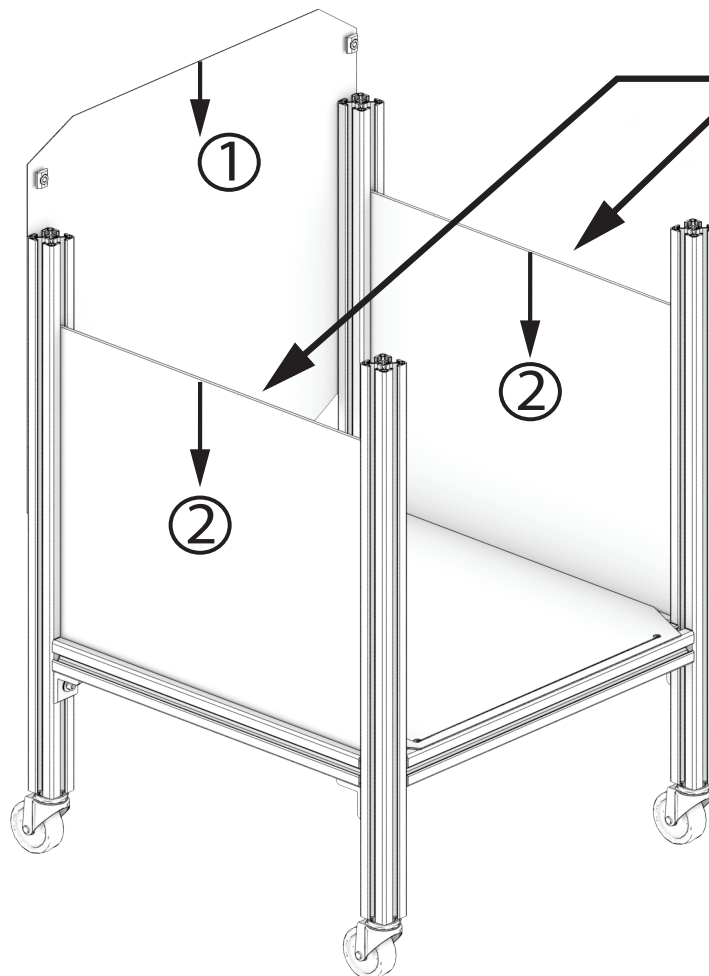
Lay cart on its back and slide in 26" rails (with casters) leaving 7" at bottom



Step 4

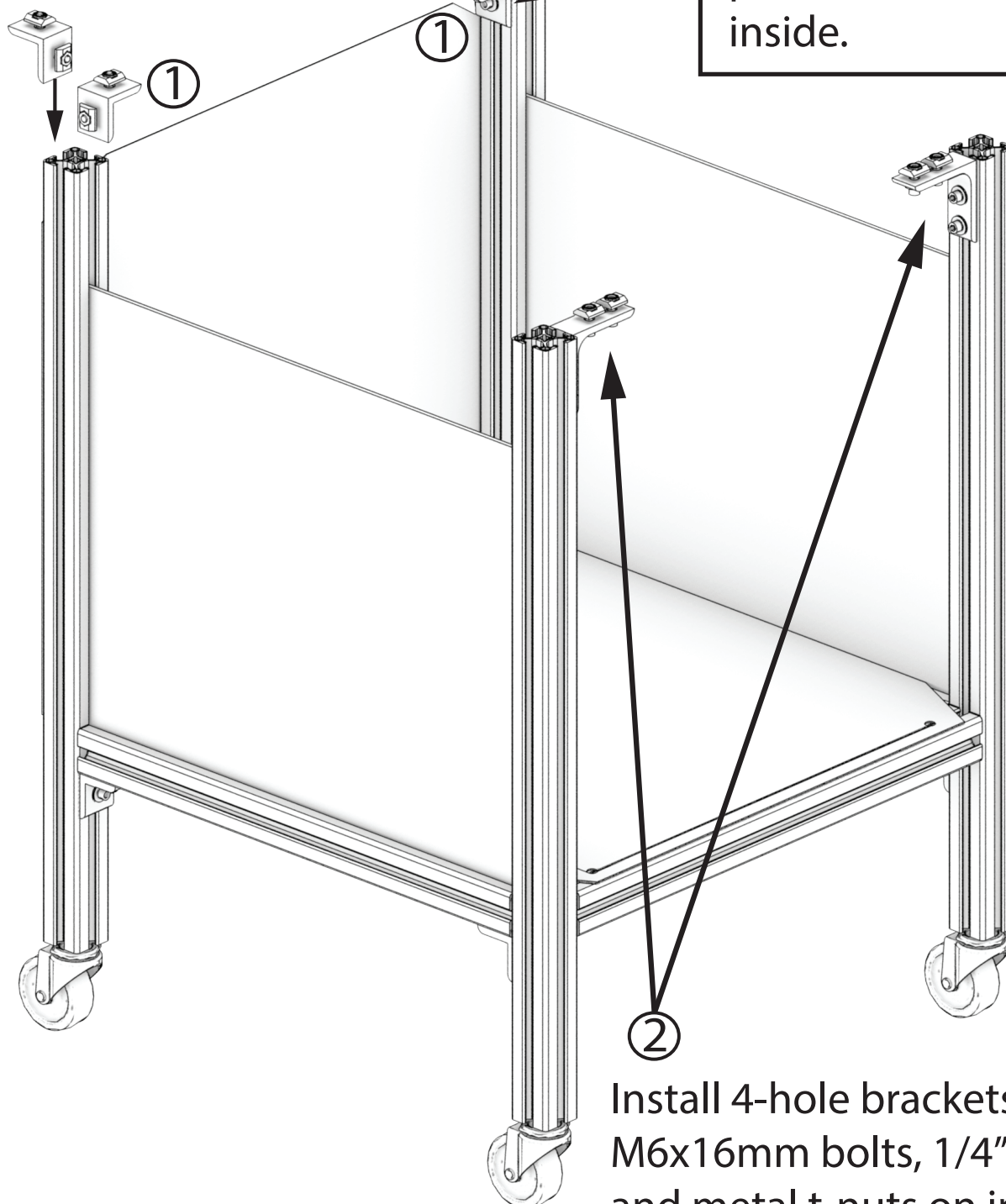
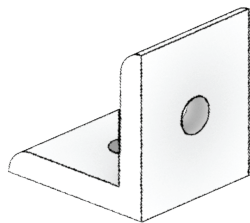
① Attach rear metal panel w/M6 x 16mm bolts, 1/4" washers and metal t-nuts

② Slide acrylic side panels into aluminum rails



Step 5

- ①
Install 2-hole 90° brackets using M6x16mm bolts, 1/4" washers and metal t-nuts



IMPORTANT

For gMax 2 printers:
Install on outside rear of
cart.

For gMax 1.5 & 1.5+
printers: Install on the
inside.

- ②
Install 4-hole brackets using M6x16mm bolts, 1/4" washers and metal t-nuts on inside of cart at the front.

Step 6

Remove the corner feet and brackets from your gMax printer.

1. Slide printer into right side of cart.
2. Slide printer into left side.
3. Center the printer.
4. Tighten all bolts when done.
5. Install rubber dampers on top corners of acrylic panels.

NOTE: You may have to loosen some of the bolts to ensure proper fit prior to final tightening.

