



# Fully Enclosed gMax 2 PRO

---

**Massive 18" x 18" x 24" Print Volume  
(457.2 x 457.2x 609.6mm)**

**Slice Engineering Copperhead Hotend  
Prints 400° C out of the box**

**Powerful 32-bit Arm Cortex-M4  
Processor STM32**

**Full Color Responsive Touch Screen**

**Full Enclosure with Double Doors  
and 360° Visibility**

**Phone and Video Pro Technical  
Support Plan Options**

**G10FR4 Glass-Reinforced Composite  
Heated Bed with External SSR**

**Swappable 18" x 18" Build Plates**

**PRO Runout Sensor**

**RGB LED Illuminated Gantry**

**Sensorless Homing**

**Metal Rolling Cart with Locking Casters  
(Optional)**

**Silent TMC2130 Stepper Drivers**

**USA Manufactured**

**The Enclosed gMax 2 PRO: \$6,295 - \$8,275**



[shop.gcreate.com](https://shop.gcreate.com)

[gcreate.com](https://gcreate.com)

[info@gcreate.com](mailto:info@gcreate.com)

**141 Flushing Ave, Building 77 Unit 605, Brooklyn, NY 11205**

# gMax 2 PRO

---

**Massive 18" x 18" x 24" Print Volume  
(457.2 x 457.2 x 609.6mm)**

**18" x 18" Ultra Durable Glass-Reinforced  
Composite Heated Bed with External SSR**

**Full Color Responsive Touch Screen**

**Slice Engineering Copperhead  
Hotend Prints 400° C**

**Powerful 32-bit Arm Cortex-M4  
Processor STM32**

**Phone and Video Pro Technical  
Support Plan Options**

**PRO Runout Sensor**

**RGB LED Illuminated Gantry**

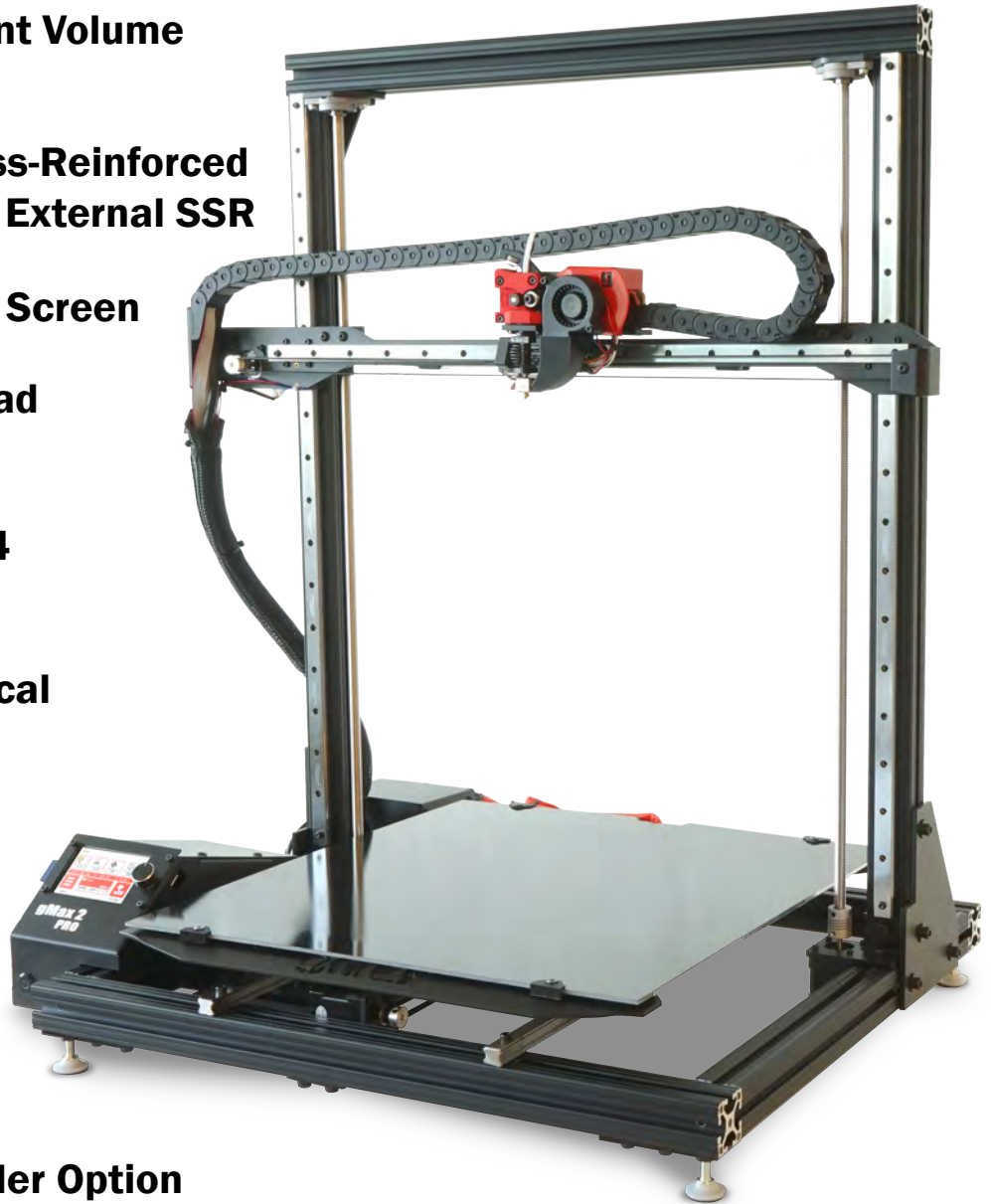
**Sensorless Homing**

**USA Manufactured**

**Simplified 2 in 1 Dual Extruder Option**

**Silent TMC2130 Stepper Drivers**

**The gMax 2 PRO: Starting at \$4,895**



[shop.gcreate.com](https://shop.gcreate.com)

[gcreate.com](https://gcreate.com)

[info@gcreate.com](mailto:info@gcreate.com)

141 Flushing Ave, Building 77 Unit 605, Brooklyn, NY 11205

# gMax 2 Pro Specifications

## FDM – Fused Deposition Modeling

### Dimensions:

18" x 18" x 24" inch (7,776 in<sup>3</sup>) print volume  
(457.2 x 457.2 x 609.6 mm)

### Weight:

Approx. 80lbs

### Layer Resolution:

0.01mm Micron to 0.9mm Micron (Nozzle Dependent)

### Linear Motion:

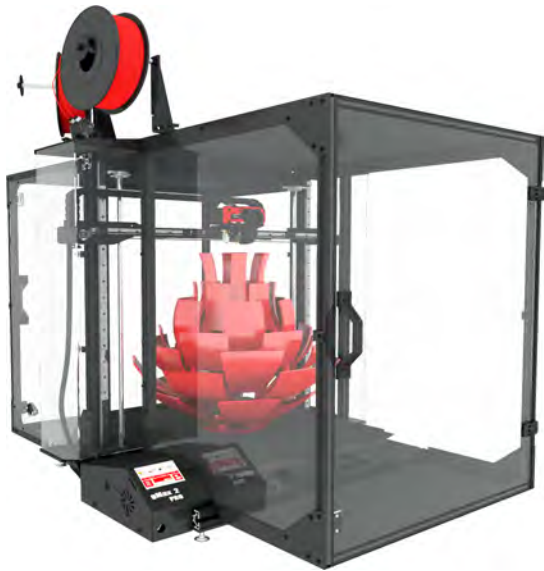
Hiwin Metal Linear Guides for X, Y and Z  
4mm Pitch TR10 10mm Lead Screws

### Speed:

200+ mm/sec

### Resolution:

0.000492" XY Resolution  
0.0000492" Z Resolution  
0.10mm Min Layer Resolution  
Variable 1/256 Microstepping Controlled by Firmware



### Hotend Single:

USA-Made Slice Engineering Copperhead Hotend with 50W Heater Cartridge and Advanced Heat Dissipation. Prints up to 400°C.

### Hotend 2in1 Dual:

2in1 Aluminum Alloy Dual Input / Single Output Hotend with 50W Heater Cartridge. Prints up to 243°C.

### Hotend Chimera+ Dual:

Dual Nozzle Dual Output Hotend with Independent 40W Heater Cartridges. Prints up to 300°C.

### Filament:

1.75mm Diameter  
Dual Bearing PRO Runout Sensor

### Connection:

Print via USB, SD Card or USB Memory Stick  
Octoprint Compatible for Advanced WiFi, Cloud and Remote Monitoring and Printing

### Electronics:

32 Bit SKR v2 With Arm Cortex-M4 STM32 Processor

### Motors:

NEMA 17 1.68 Amp, 1.8 Step Angle  
Silent TMC2130 Drivers with SPI

### Frame:

Genuine 80/20 Aluminum 1.5" T-Slot Profile with Powder Coated Aluminum and Steel Parts Manufactured in the USA  
3D Printed Parts are Printed in Carbon Fiber-PETG  
Powder Coated Metal and Clear Acrylic Enclosure Option

### Bed:

18.5" x 18" Ultra Durable Glass Fiber Reinforced Heated Bed by Buildtak Controlled by Printer. 800W Keenovo Silicone Heated Pad

### Bed Leveling:

Integrated Genuine BLTouch Smart Bed Leveling Sensor with 144 Point Bi-Linear Mesh Bed Leveling that Saves to Memory

### Power Supply:

120v/240v Micro ATX (Printer Uses Approx. 80 Watts)  
120v (Only) 800 Watt AC Heated Bed

Responsive  
Touchscreen



32 Bit Electronics with  
Silent TMC2130 Stepper Drivers



External Heated  
Bed SSR



G10FR4 Glass Fiber-Reinforced  
Laminate Heated Bed

